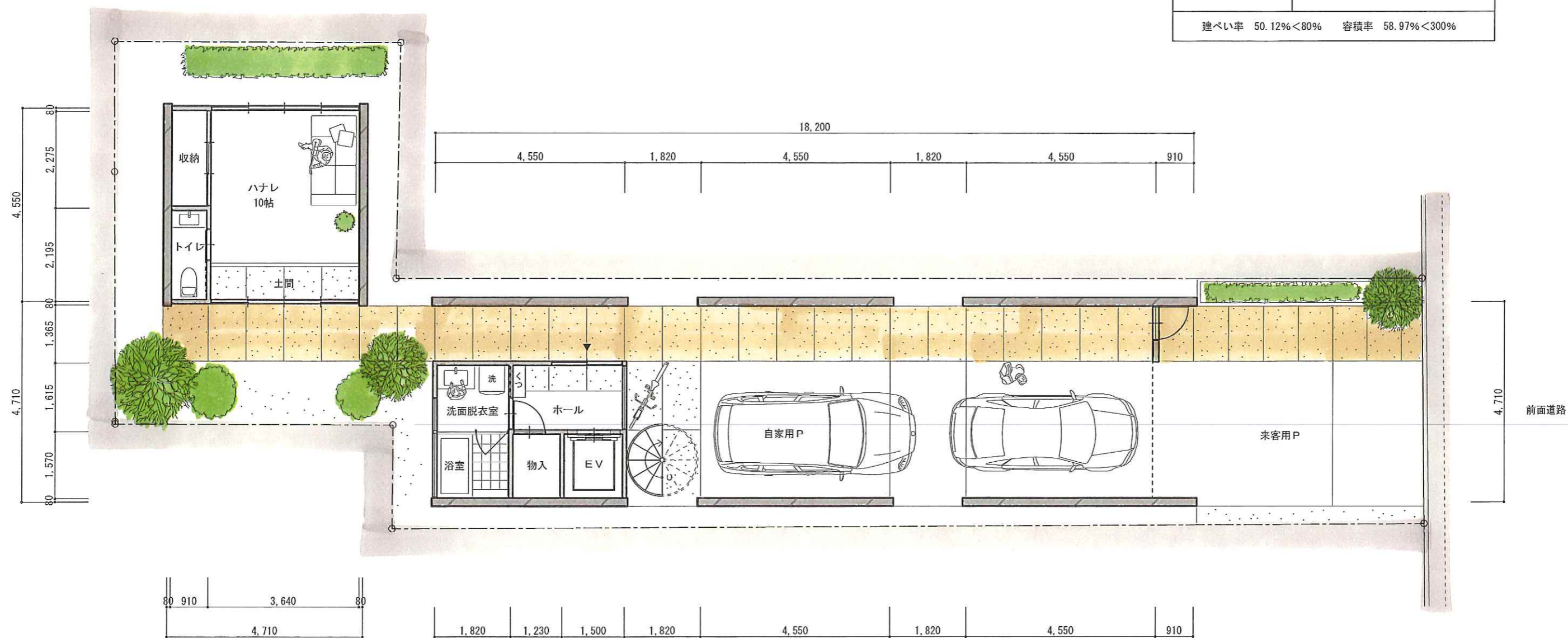
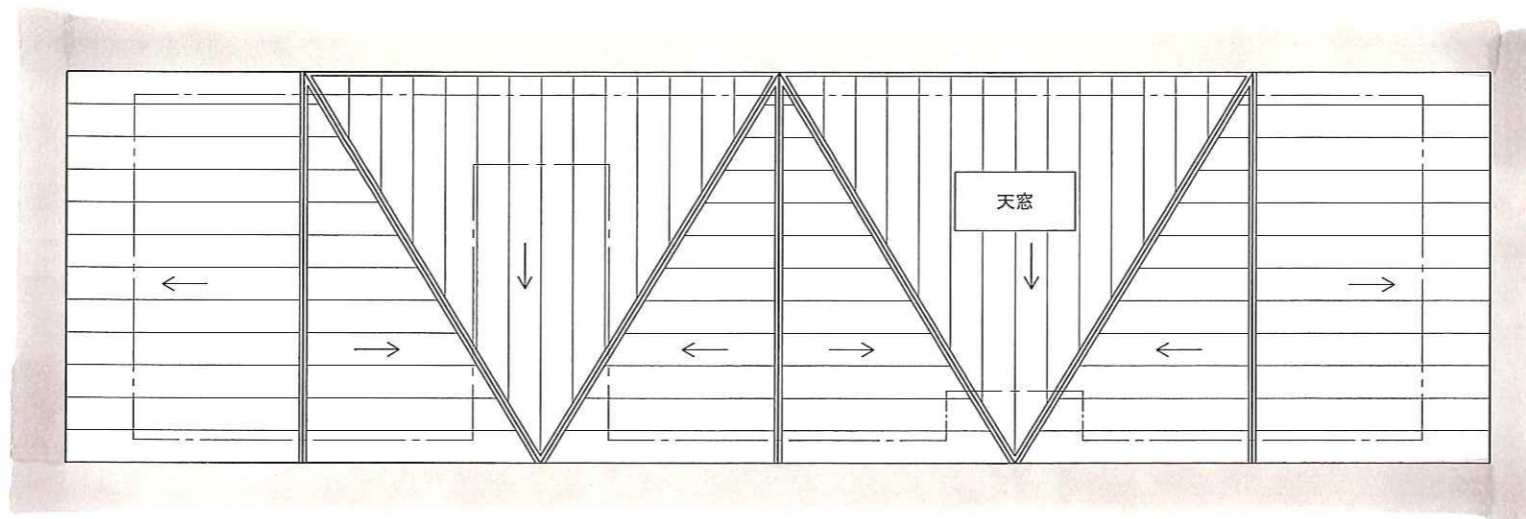
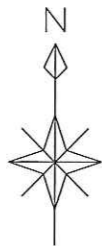


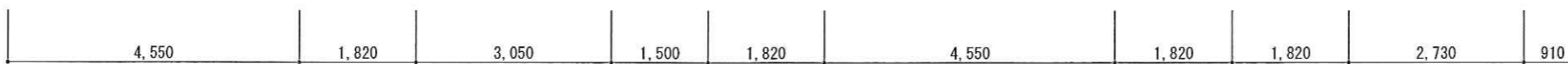
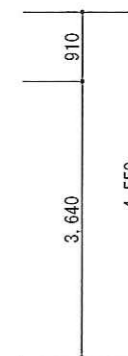
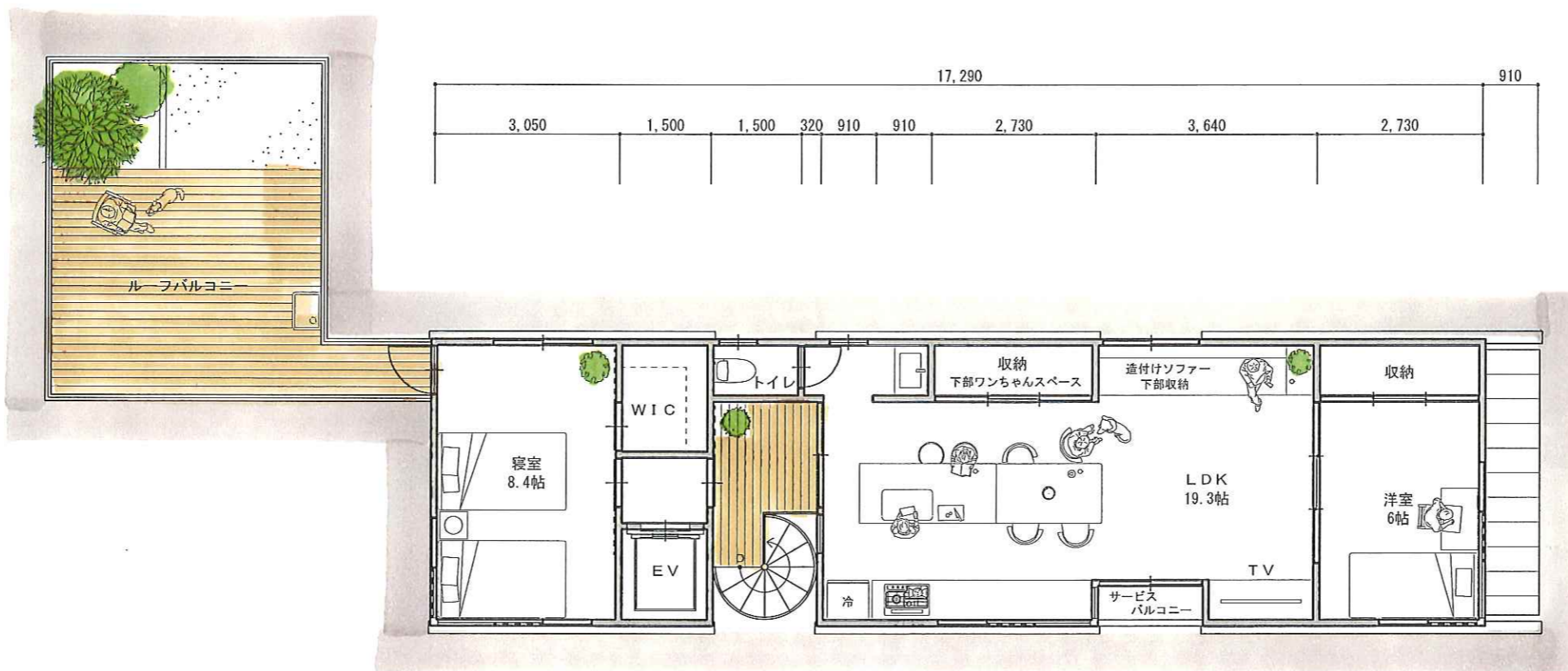
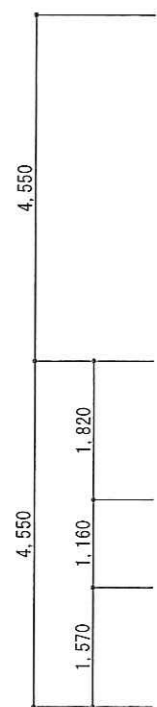
敷地面積	205.26㎡ (62.09坪)
建築面積	102.87㎡ (31.19坪)
1階床面積	72.63㎡ (21.97坪)
内駐車場面積	36.34㎡ (10.99坪)
2階床面積	78.67㎡ (23.80坪)
延床面積	151.30㎡ (45.77坪)
建ぺい率 50.12% < 80% 容積率 58.97% < 300%	



1階平面図 1/100



屋根伏図 1/100



2階平面図 1/100